

## FREQUENTLY ASKED

# Questions

### How long does it take to work?

After only a few applications, most people will notice an improvement in skin smoothness, softness, and hydration of the skin. A visible reduction in facial lines takes place gradually. To achieve good, visible results, the product should be used for at least three months.

### Will Wrinkle and Frown Line Cream be suitable for my skin?

The product is suitable for woman and men of all nationalities and skin types.

### How does Wrinkle and Frown Line Cream work?

The unique combination of ingredients work together to help restore the dermal matrix, smooth expression lines, and improve hydration to the skin.

### How does Wrinkle and Frown Line cream compare to other wrinkle creams?

There have been several clinical studies showing that Matrixyl™ (a key ingredient of Wrinkle and Frown Line cream) is superior to both Vitamin C and Retinol, two of the best known ingredients in skin care. A two-phase six month clinical study showed a marked improvement in the visual appearance of wrinkles with Matrixyl™ in comparison to a commercial product containing Vitamin C. In another double blind four month study, Matrixyl™ was found to work faster and be less irritating than Retinol.

### How does Wrinkle and Frown Line cream compare to Facial Injections?

Wrinkle and Frown Line Cream works more gradually but can produce similar visible results without the potential pain, expense, or side effects.

## Five CREAMS IN ONE

**Wrinkle and Frown Line Cream** is the only cream you will ever need. It can be used daily as:

- a wrinkle cream
- a moisturizer
- a day cream
- a night cream
- a make-up base

## FOR All SKIN TYPES

**Wrinkle and Frown Line Cream** is designed for women and men of all ages, nationalities and skin types. Even though the cream is completely non-irritating to most users, a small percentage of people may experience a mild tingling sensation after use. This should disappear after several applications as the skin builds up tolerance. If you feel you are especially sensitive, discontinue use.

## WRINKLE AND FROWN LINE CREAM

## Will WORK FOR YOU

**Wrinkle and Frown Line Cream** is a state-of-the-art cream for reducing the visible signs of aging of the skin. If you apply it faithfully, we are confident that you will be delighted with the results.



# Smooth wrinkles and frown lines



## The Cosmetic Alternative to Facial Injections

# Wrinkle and Frown Line Cream

smoothes facial lines on the forehead and around the eyes, nose and mouth.

The cream was developed as a cosmetic alternative to facial injections which have achieved good results for many women and men but possible side effects and high cost have caused many people to look for a more natural, safer solution.

## VISIBLE

## Results

### Wrinkle and Frown Line Cream:

- Diminishes the appearance of fine lines and wrinkles
- Decreases wrinkle depth up to 68%
- Firms, tightens and tones
- Moisturizes

## Plus

- No painful injections
- No prescription required



## HOW IT

## Works

**Wrinkle and Frown Line Cream** contains a unique combination of three advanced, naturally derived ingredients obtained from around the world.

**Matrixyl™** is a breakthrough ingredient from France, shown to significantly decrease the visible appearance of wrinkles.

One six month double blind study involving 35 women ages 34 to 72, revealed that Matrixyl™ produced a highly significant reduction in deep and moderate wrinkles. The researchers documented changes as high as 68%. It left no doubt to the researchers that those who used Matrixyl™ throughout the study experienced dramatic results. The study also showed that the longer they used it, the better they looked.

The study demonstrated the positive, measurable effects of Matrixyl™ for decreasing:

- Wrinkle volume
- Wrinkle density
- Wrinkle depth
- Surface area of deep wrinkles
- Skin roughness

**Hyaluronic Acid** is one of the world's best moisturizers. As skin ages, it loses its ability to hold water. Hyaluronic Acid helps deliver back water to the skin cells. These moisture-saturated skin cells help your skin look firm, tight, and younger-looking.

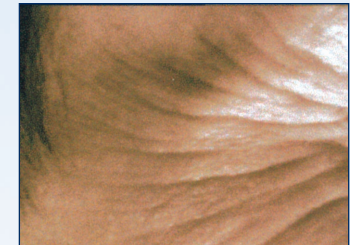
Matrixyl™ is a trademark of Sederma  
Matrixyl™ is licensed under U.S. Patent No. 6,492,326  
Argireline® is a trademark of Lipotec

**Argireline®** is a trademarked ingredient from Spain which has been shown to smooth expression lines. Controlled studies have demonstrated that facial wrinkle depth can be reduced, especially in the forehead and around the eyes, and that Argireline® can prevent apparent facial skin aging.

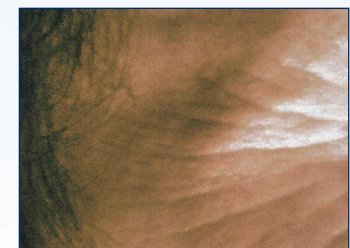
## FOR

## Best RESULTS

For best results, Wrinkle and Frown Line Cream should be used twice a day, morning and evening. Apply Wrinkle and Frown Line Cream on cleansed skin using gentle upward strokes. A sunscreen should be used in the daytime over Wrinkle and Frown Line Cream.



Before



After 4 months